

TECHNICAL DATASHEET



3162

REAR LAMP

Old Part Number: 301.62

Homologation marks:

2a E9 01 5489 Reg 6 UNECE
AR E9 00 5489 Reg.23 UNECE
F E9 00 5489 Reg 38 UNECE
IA E9 00 5489 Reg 3 UNECE
L E9 00 5489 Reg 4 UNECE
R E9 02 5489 Reg 7 UNECE
S1 E9 02 5489 Reg 7 UNECE

Main Functions:

5 functions - side-indicator, reverse or fog, position/stop, registration plate light and reflector



RAW MATERIALS

Lens: PMMA

Housing: PP 20%T

Registration Plate: PC Crystal

Reflector: PC White

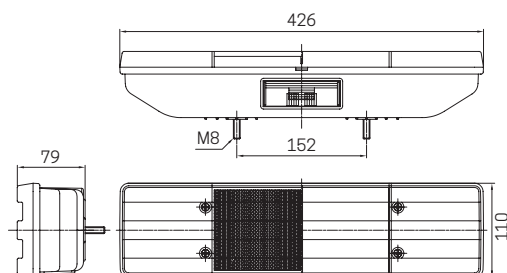
PC silver coating (fog function)

Bulb Holder: Galvanised Steel Plate 0,8mm

Contacts: Stainless steel

Bolts and Screws: Iridescent Zinc Treatment

Distance between bolts: 152mm M6



POWER SOURCE

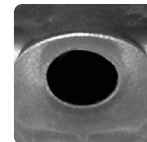
P21 BA 15s , R5W BA 15s (Not supplied)

CONNECTIONS

Universal grommet (P/G), Hole at the back



Universal w/ cable entry nut plug



Original plug